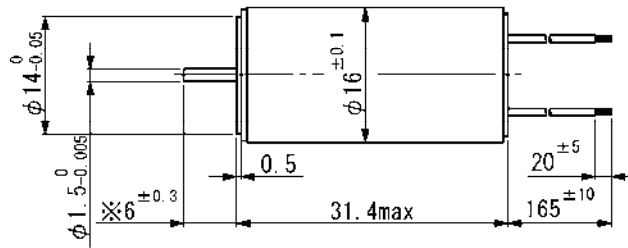
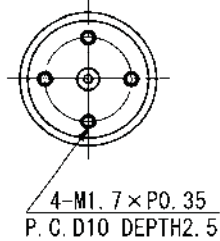


SCL16-30

Precious metal commutation

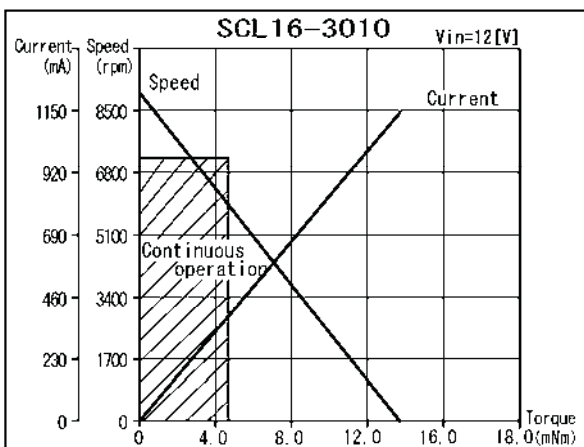


Weight 37.7 g
Dimension in mm

Note) Dimension marked ※ is measured with shaft pushed against motor.

For combination with gearheads: SSG15, SPG16

Ordering number	SCL16				
	-3003	-3006	-3010	-3016	-3024
1 Nominal voltage	6	9	12	15	18 V
2 Terminal resistance	3.1	5.5	11	16	24 Ω
3 Output power	2.8	3.7	3.4	3.4	3.3 W
4 Efficiency	87	88	87	87	87 %
5 No-load speed	7840	9120	9000	8930	9110 rpm
6 No-load current	9	7	5	4	3 mA
7 Stall torque	13.8	15.4	14.4	14.7	13.9 mNm
8 Friction torque	0.063	0.063	0.063	0.063	0.063 mNm
9 Back-EMF constant	0.76	0.98	1.3	1.7	2.0 mV/rpm
10 Torque constant	7.3	9.4	12.7	16.0	18.8 mNm/A
11 Slope of N-T curve	570	590	620	610	650 rpm/mNm
12 Coil inductance	0.053	0.088	0.16	0.25	0.35 mH
13 Mechanical time constant	7	7	7	7	7 ms
14 Rotor inertia	1.2	1.2	1.1	1.1	1.1 gcm ²
Continuous operation					
15 Max. torque	4.8	4.7	4.5	4.6	4.4 mNm



General specifications

16 Operating temperature	-20...+60	°C
17 Max. coil temperature	+80	°C
18 Thermal resistances	R _{th1} = 4, R _{th2} = 28	K/W
19 Bearings type	Sintered sleeves	
20 Max. shaft radial load	1.2 (5 mm)	N
21 Max. shaft axial load	0.2	N
22 Max. axial load at standstill	9.8	N
23 Shaft radial play	0.05	mm
24 Shaft axial play	0.03...0.2	mm

Options:

Lead wires length, shaft length, special coils, commutator with capacitors.

V01

Specifications subject to change without notice